

Verifi



P5100 Fingerprint Reader

with ROBOFORM PASSWORD MANAGER



Start Here ▶

IMPORTANT.

This installation manual is for
Windows 8.1

Quick Installation Guide

Windows
Logon

About the Reader

Proper Use of the Fingerprint Reader

NOTE: Fingerprint verification performance is dependent upon how well you enroll your fingerprint.



PROPER FINGER PLACEMENT
Finger is flat to surface.



IMPROPER FINGER PLACEMENT
Finger is not flat to surface.

Maintenance

While the sensor is very robust do not use excess cleaning fluids. Use a wet damp cloth for cleaning if needed.

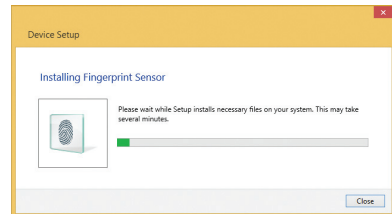
Make sure you have the following:

- Verifi P5100 Fingerprint Reader
- Windows 8.1
- Verifi CD Installation Software

1. Install Reader

Install P5100 for Windows Logon

- 1.1** Your Windows User Account **MUST** be password protected before Windows will allow biometrics to be used. If you currently do not have a Windows password, see Control Panel > User Accounts.
- 1.2** Goto your Windows 8.1 desktop application. Note: This is the legacy desktop not the Tile interface.
- 1.3** Plug in your fingerprint device into an available USB port and let the system auto install the drivers. (Note: you will need an internet connection.)
- 1.4** Once driver installation is complete, please reboot your system.

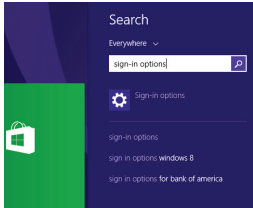


Default "Administrator" Account

Windows does not allow the built in administrator user account to utilize fingerprint biometrics. However, you may use any other user name with or without administrator privileges with your fingerprint device. Only the user "administrator" is prohibited.

2. Enroll

Fingerprint Enrollment



2.1 Go to Windows 8.1 Tiles and search for Sign-in options.

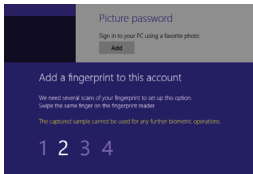
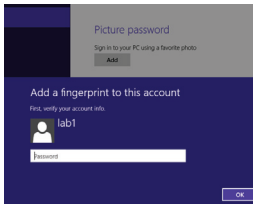
2.2 Click on sign in options and add fingerprint. Use your Windows password to continue.

2.3 Repeatedly place finger until enrollment is complete. NOTE: This is a touch sensor, not a swipe. Place your finger on sensor do not move finger across sensor during enrollment.

2.4 It is recommended to enroll additional finger(s). However, this is not required.

2.5 Your Windows login is now functional and can be tested by performing a logoff/logon. NOTE: You may see a Windows message during enrollment indicating the 'captured sample cannot be used' you may ignore this statement.

2.6 Future logons can be performed by the simple touch of your finger.



Choosing different fingers

All fingers are available for enrollment but we recommend the index fingers from each hand.

3. Install Roboform

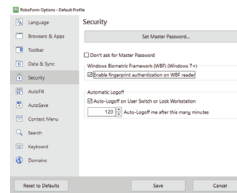
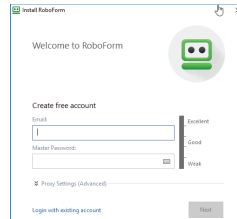
Setting up Roboform Website Password Manager

3.1 Install the Roboform Free edition by launching [Setup 2 - Roboform](#) found on your Verifi CD.

3.2 During the install wizard you will be asked to enter an email and master password to setup your Roboform account.. Your Free edition is limited to the PC you first setup. To use the same passcards on other devices you can purchase the Everywhere edition directly from Roboform.

3.3 During installation you will be prompted for an email and Master Password. This password is used to encrypt all your future passcards (Note: passcards are your individual website login credentials) and is a backup to your fingerprint reader.

3.4 Now enable Roboform to use your fingerprint reader as a Master Password by right-clicking on system tray roboform icon and selecting 'Options > Security' and enabling the top check box "Enable fingerprint authentication on WBF reader"



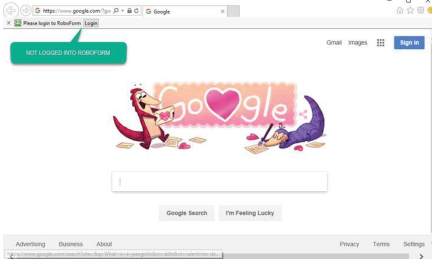
Biometric Domain Logon

Please, contact your local IT administrator regarding biometric domain logon to domain.

4. Using Roboform



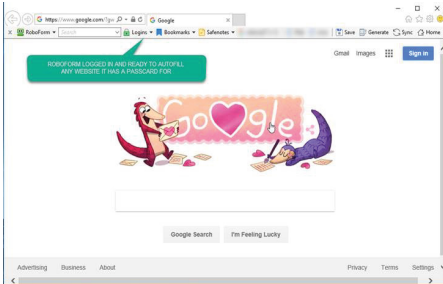
Using Fingerprint for Master Password



4.1 To Login to Roboform use the Login Button located in the browser toolbar.

4.2 Swipe finger to authenticate to Roboform.

4.3 This effectively removes the need to type your Roboform Master Password however you will always want to remember this password in case of hardware failure, reinstallation, or non-biometric use of Roboform.



Begin Using !

Your new Fingerprint Reader is capable of performing Windows Logon, User Account Control (UAC) for administrative credentials and with Roboform as a Master Password.

To test, log off and then back on to your Windows account using your fingerprint.

Now you can enjoy logging on to Windows, Web sites, and programs with just a slide of your finger.

ATTENTION:

For help using Roboform go to <http://www.roboform.com/support/overview>

The site includes manuals, tutorials, and online support.



Verifi
P5100 Fingerprint Reader
with ROBOFORM PASSWORD MANAGER



www.zvetcobiometrics.com

ZVETCO Tech Support

For technical support and questions
please email or call:

technical.support@zvetco.com
407-567-7360

ZVETCO Sales

For further Sales
information please
call:

407-567-7358

Zvetco Biometrics
489 State Rd 436, Suite 109
Casselberry, FL 32707
407-567-7357

2017 Zvetco Biometrics. All rights reserved. All trademark names are registered trademarks of respective manufacturers listed.

QAS 099
5205-006190