



**Verifi**

*P2000 Fingerprint Reader*

with ROBOFORM PASSWORD MANAGER

# Start Here

**IMPORTANT.**

This installation manual is for  
Windows 10

Quick Installation  
Guide

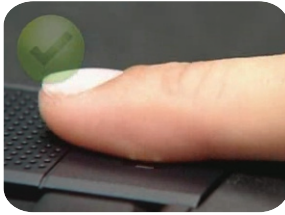
Windows  
Logon

# About the Reader

## Proper Use of the Fingerprint Reader

**NOTE:** Fingerprint verification performance is dependent upon how well you enroll your fingerprint.

### START POSITION



### END POSITION



### PROPER FINGER PLACEMENT

Finger is flat to surface and slid with uniform pressure and speed.



### IMPROPER FINGER PLACEMENT

Finger is not flat to surface and /or speed is inconsistent.

VIDEO IS INCLUDED ON CD.  
To see a video on proper finger movement, please click [HERE](#).

### Maintenance

While the sensor is very robust do not use excess cleaning fluids. Use a wet damp cloth for cleaning if needed.

## Make sure you have the following:

- Verifi P2000 Fingerprint Reader
- Windows 10
- Verifi CD Installation Software

# 1. Install Reader

## Install P2000 for Windows Logon

- 1.1 Your Windows User Account **MUST** be password protected before Windows will allow biometrics to be used. If you currently do not have a Windows password, see Control Panel > User Accounts.
- 1.2 Plug in your fingerprint device into an available USB port and let the system auto install the drivers. (Note: you will need an internet connection.)
- 1.3 For most installations the driver is automatically loaded. In the rare case the driver did not load automatically the driver is available on the mini-CD for manual installation.

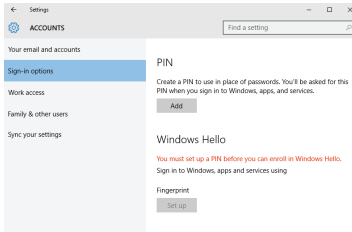
# 2. Enroll

## Fingerprint Enrollment

- 2.1 Select the Start Button, then select Settings > Accounts > Sign-In options to setup Windows HELLO. You **MUST** first activate Windows HELLO by setting up a PIN. After the PIN is setup the option for adding Fingerprints will become active.

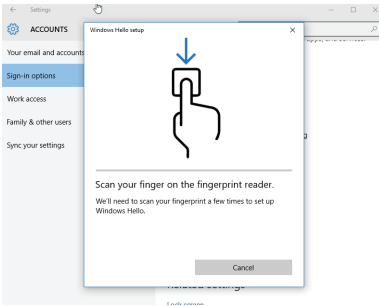
### Default "Administrator" Account

Windows does not allow the built in administrator user account to utilize fingerprint biometrics. However, you may use any other user name with or without administrator privileges with your fingerprint device. Only the user "administrator" is prohibited.



2.2 Click add fingerprint. Use your Windows PIN to continue.

2.3 Repeatedly slide finger until enrollment is complete.



2.4 It is recommended to enroll additional finger(s). However, this is not required.

2.5 Your Windows login is now functional and can be tested by performing a logoff/login.

2.6 Future logons can be performed by the simple swipe of your finger.

### Choosing different fingers

All fingers are available for enrollment but we recommend the index fingers from each hand.

## 3. Install Roboform

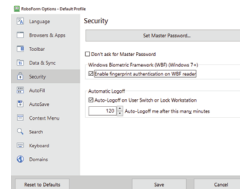
### Setting up Roboform Website Password Manager

3.1 Install the Roboform Free edition by launching [Setup 2 - Roboform](#) found on your Verif CD.

3.2 During the install wizard you will be asked to enter an email and master password to setup your Roboform account.. Your Free edition is limited to the PC you first setup. To use the same passcards on other devices you can purchase the Everywhere edition directly from Roboform.

3.3 During installation you will be prompted for an email and Master Password. This password is used to encrypt all your future passcards ( Note: passcards are your individual website login credentials) and is a backup to your fingerprint reader.

3.4 Now enable Roboform to use your fingerprint reader as a Master



Password by right-clicking on system tray roboform icon and selecting 'Options > Security' and enabling the top check box "Enable fingerprint authentication on WBF reader"

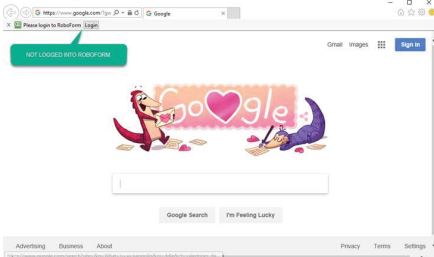
### Biometric Domain Logon

Please, contact your local IT administrator regarding biometric domain logon to domain.

## 4. Using Roboform



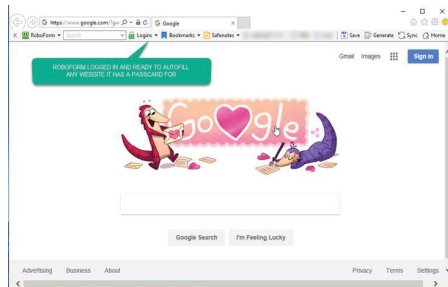
### Using Fingerprint for Master Password



4.1 To Login to Roboform use the Login Button located in the browser toolbar.

4.2 Swipe finger to authenticate to Roboform.

4.3 This effectively removes the need to type your Roboform Master Password however you will always want to remember this password in case of hardware failure, reinstallation, or non-biometric use of Roboform.



## Begin Using !

Your new Fingerprint Reader is capable of performing Windows Logon, User Account Control (UAC) for administrative credentials and with Roboform as a Master Password.

To test, log off and then back on to your Windows account using your fingerprint.

Now you can enjoy logging on to Windows, Web sites, and programs with just a slide of your finger.

### ATTENTION:

For help using Roboform go to <http://www.robiform.com/support/overview>

The site includes manuals, tutorials, and online support.



**Verifi**

# *P2000 Fingerprint Reader*

with ROBOFORM PASSWORD MANAGER



[www.zvetcobiometrics.com](http://www.zvetcobiometrics.com)

## **ZVETCO Tech Support**

For technical support and questions  
please email or call:

[technical.support@zvetco.com](mailto:technical.support@zvetco.com)  
407-567-7360

## **ZVETCO Sales**

For further Sales  
information please  
call:

407-567-7358

Zvetco Biometrics  
489 State Rd 436, Suite 109  
Casselberry, FL 32707  
407-567-7357

2017 Zvetco Biometrics. All rights reserved. All trademark names are registered trademarks of respective manufacturers listed.