



Verifi
FingerTouch Security
ENTERPRISE

Start Here ►

IMPORTANT.

Always install the Software
prior to Hardware Installation



Quick Installation Guide

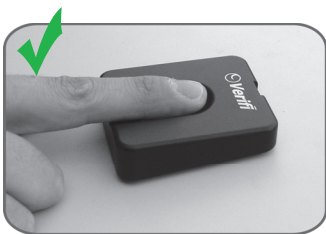
Windows XP
Fast User Switching
Compatible

About the Reader

Proper Use of the Fingerprint Reader

NOTE: Fingerprint verification performance is dependent upon how well you enroll your fingerprint.

Correct use of the readers finger guide increases the repeatability of fingerprint placement. This will enhance fingerprint authentication.



PROPER FINGER PLACEMENT

Finger is flat to surface and centered in fingered guide.



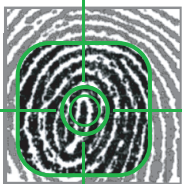
IMPROPER FINGER PLACEMENT

Finger is not flat to surface and not placed in fingered guide.

Multi-factor Authentication

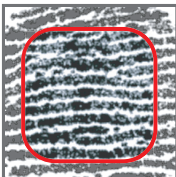
Verifi ID Manager supports: password, fingerprint, smart cards, and tokens for authentication. Passwords and Fingerprints are covered in this guide. See help guide for other authentication methods.

The fingerprint enrollment process consist of multiple placements of the finger to acquire several images for fingerprint template creation. Placing the core of your fingerprint in the center of the active sensor area increases the quality of the fingerprint enrollment.

	<p>Fingerprint Core: Center of finger swirl patterns placed in sensor area.</p> <p>✓ GOOD IMAGE</p>
---	--

Slight variations in the placement of the core are acceptable BUT NOT BENEFICIAL to fingerprint enrollment.

Consistent placement of your fingerprint core in the center of the sensor will give maximum performance.

	<p>No Fingerprint Core: No core found from extreme placement of finger.</p> <p>⊘ POOR IMAGE</p>
---	--

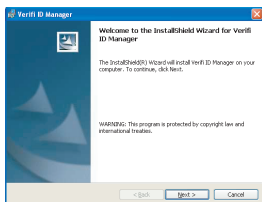
Make sure you have the following:

- Installation Software CD
- Fingerprint Reader
- Windows 2000 or Windows XP
- Internet Explorer 6.0

1. Install

Run the Easy Install Wizard Software

- 1.1 Make sure you are logged on to a Windows Account with ADMINISTRATOR PRIVILEGES.
- 1.2 Shut down any programs that are running on your computer. Do not connect the Fingerprint Reader at this time.
- 1.3 Insert the Verifi Identity Manager Software CD. The Easy Install Wizard screen will automatically appear on your screen.



- 1.4 You will see the Install Wizard's welcome screen. Click "Next".



- 1.5 Read and follow installation instructions.
- 1.6 Restart your PC.

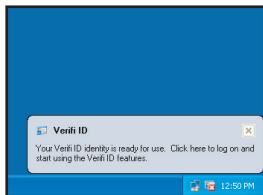
NOTE for Manual CD-ROM

If Easy Install Wizard does not start up automatically, select your CD-ROM drive from "My Computer" and double-click on the file named "Setup" on the CD-ROM.

2. Setup

Setup for Verifi Identity Manager

- 2.1 Log on with User Name and Password for your Windows Account.
(Note: this account does not need Administrator Privileges.)



- 2.2 If the Registration Wizard welcome screen automatically starts proceed to step 2.3. For all others, Click on Verifi ID "icon" or "bubble" to initiate creating your Verifi Identity. Log on with the same User Name and Password as in

step 2.1. This has now synchronized your Windows Account and Verifi Identity and will not be required during future logons.



- 2.3 Upon the Registration Wizard's welcome screen. PLEASE INSTALL THE FINGER PRINT READER INTO AN AVAILABLE USB PORT AT THIS TIME. Windows should automatically recognize your new hardware. If it does not, follow the Windows hardware installation Wizard

for manual hardware setup.

- 2.4 Upon successful hardware recognition Click "Next" on the Verifi ID Registration Wizard to continue.

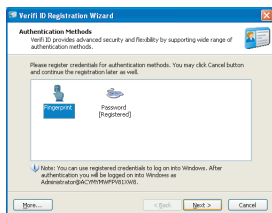
Next

Fingerprint Reader Installation

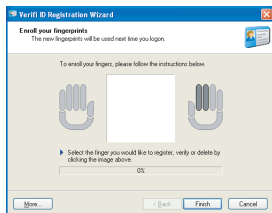
If manual Windows hardware installation is required, the drivers for the Reader are located on the Verifi Identity Manager CD.

3. Enroll

Fingerprint Enrollment



- 3.1 Your password has automatically been registered as a Verifi ID logon method. To register your fingerprint select the fingerprint icon and Click :Next"



- 3.2 The right index finger has been selected by default, now PLACE AND HOLD this right index finger on the fingerprint sensor.



- 3.3 Your fingerprint image will appear on the screen. Once the task bar indicates a successful image capture, lift your finger from the fingerprint sensor.
- 3.4 Repeat this process of placing your finger and lifting until the task bar reaches 100%.

Choosing different fingers

The enrollment wizard will default for the right index and right middle fingers. However, all fingers are available for enrollment.



3.5 A second finger will now be prompted for enrollment. Place and hold your right middle finger.

3.6 Repeat place and hold until task bar reaches 100%.

3.7 Click "Finish"



Begin Using !

Congratulations! You have finished installing the Verifi Fingertouch Security system.

To test, log off and then back on to your Windows account using your fingerprint.

ATTENTION WINDOWS XP FAST USER SWITCHING:

When using Windows XP Fast User Switching an additional password block will be required during the first fingerprint logon attempt. Providing this password synchronizes your Windows Account with your new Identity and will not appear during subsequent logons.

Now you can enjoy logging on to Windows, Web sites, and programs with just a touch of your finger.

See Help guide for instructions on using the many new features of your Fingertouch system.



Verifi
FingerTouch Security
ENTERPRISE



www.everifi.com

ZVETCO Tech Support

For technical support and questions please email or call:

techsupport@zvetco.com
407-681-0112

ZVETCO Sales

For further Sales information please email or call:

sales@zvetco.com
407-681-0042

Zvetco Biometrics
6820 Hanging Moss Rd
Orlando, FL 32807
407-681-0111

2005 Zvetco Biometrics. All rights reserved. All trademark names are registered trademarks of respective manufacturers listed.

QAS 097
5205-006190