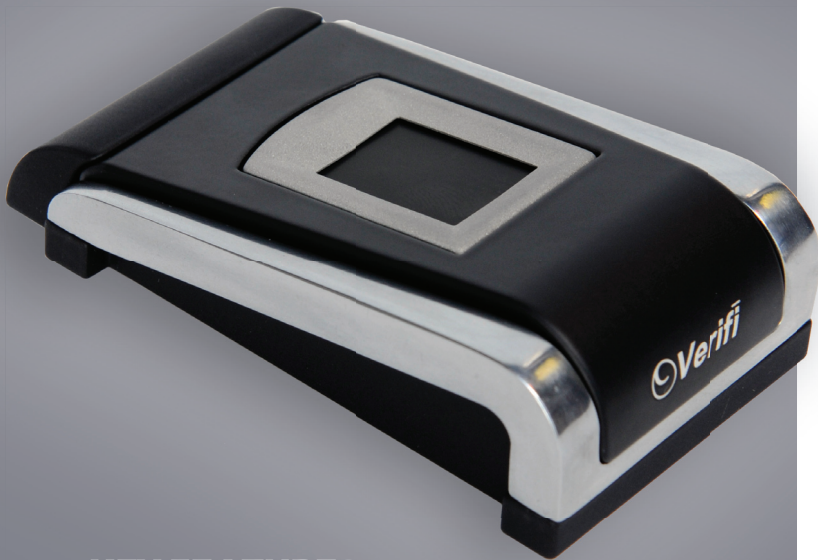


# CONSTANT RELIABILITY. IMMOVABLE SECURITY.



## P5200TPM

Mountable  
Fingerprint  
Reader

IRREMOVABLE, IMMOBILE, UNBUDGING PERFORMANCE

The P5200TPM offers the largest silicon-based fingerprint sensor on the market. Especially proficient with one-to-many applications this ergonomic USB device is perfect for large database installations. Leaning upon the proven and reliable UPEK TCS1 large area sensor this reader works well in virtually any application.

Continuing with the Verifi line of rugged biometric fingerprint readers, the P5200TPM has a solid aluminum, powder-coated enclosure for superior performance and durability.

With over five years of experience in the field, the proven UPEK technology utilized the P5200TPM ensures reliable and effective solution for biometric authentication.



**Verifi**  
Fingerprint Products

### KEY FEATURES

#### High Resolution

Greater than 500 d.p.i. resolution and 8-bits of grayscale imaging.

#### SteelCoat

SteelCoat coating (black) improves ruggedness.

#### Ergonomic Design

With a surprisingly small footprint and optimized finger positioning this unit looks good and at the same time works great.

#### Patented Active Capacitive Sensing

Provides a higher immunity to parasitic effects than passive capacitive sensing, delivering a high signal-to-noise ratio and the ability to capture fingerprints from the widest range of skin types.

#### Large Area Sensor

Sporting a 12.8mm X 18.0mm active sensing area, the P5200TPM can capture the large amount of fingerprint and minutia data needed to perform solid 1:1 verification and 1:N identification.

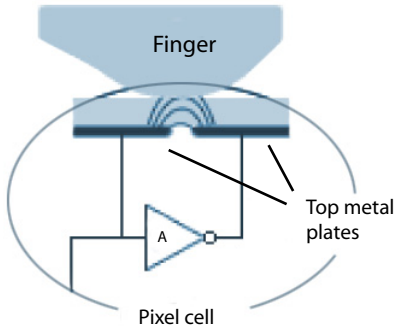
#### Robust Packaging

Solid aluminum construction with commercial grade powder coat finishing provides scratch resistance, durability and protection.



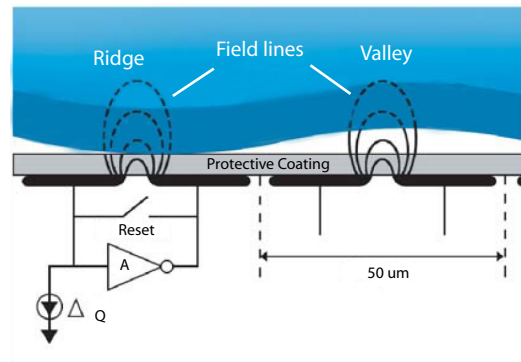
# P5200TPM

## Mountable Fingerprint Reader



### Active capacitive pixel-sensing technology

#### How it works



#### TECH SPECS

<b>Device Performance</b>	USB 2.0 Full Speed Device Operating Systems: Windows 7, Vista, XP
<b>Fingerprint Reader</b>	UPEK TCS1 with EIM Fingerprint Sensor Active Capacitive Sensing with Steel Coat High Definition: 256 X 360 Pixel Array, 12.8mm x 18mm 508 d.p.i.
<b>Mechanical</b>	Solid Aluminium Housing with Scratch Resistant Powder Coating 3.1 inches X 2.6 inches X 0.85 inches, 6.3 ounces. Cable: 6 feet, Stress Relief: >10lbs
<b>Environmental</b>	ESD Resistance: +/- 15KV Humidity: 5% to 93% RH @30°C Temperature Range: -20°C to +50°C
<b>Power Requirements</b>	Voltage: 4.5V - 5.25V Power Consumption Active: 50mA (typical) Power Consumption InActive: 1.0mA (typical)
<b>Regulatory Compliance</b>	FCC (Part B), WHQL, RoHS (Lead Free)

#### CUSTOMIZATION

- Custom Logo Marking:  
Your own Logo including graphics and text can be Lasered on the Keyboard. (upon request)

#### SDK AVAILABILITY

- Software Developer's Kit (SDKs) are available for Independent Software Developers who wish to develop products that interface with the P5200TPM.

#### SOFTWARE COMPATIBILITY

- Imprivata OneSign Integrated Platform
- SunSolaris Identity Manager SunRay Access Manager
- ActivIdentity SecureLogin (SSO)
- SAP Lock Down all Applications and Transactions to the Field Level
- {Much More}

#### PRODUCT SUPPORT

- A full range of hardware, software, and design services, including advanced sensor control and fingerprint matching algorithms.

#### UPEK

- The TCS1 TouchChip® fingerprint sensor has the largest active area available among silicon fingerprint sensors, ensuring the best possible biometric performance. The TouchChip® sensor has been specifically designed for applications such as access control, network access, e-business, asset protection and government security.

FOR MORE INFORMATION. VISIT  
[www.zvetcobiometrics.com](http://www.zvetcobiometrics.com)

**Verifi**  
Fingerprint Products