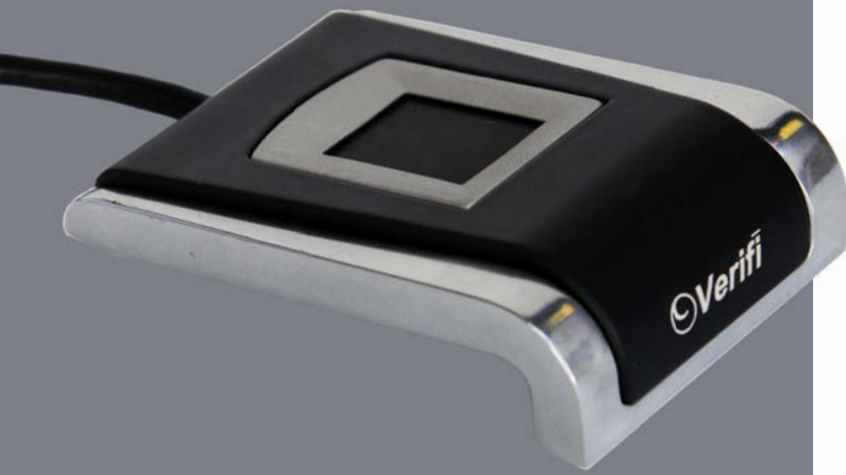


# ENTERPRISE ACCOUNTABILITY. QUANTUM PERFORMANCE.



## P5200

Desktop  
Fingerprint  
Reader

QUANTUM LEAP IN SENSOR PERFORMANCE.

A breakthrough for fingerprint image quality the P5200 offers the largest silicon-based fingerprint sensor on the market. Major enterprises rely on robust and reliable Verifi fingerprint solutions to protect critical logical assets.

The P5200 leverages the same fingerprint sensor technology embedded into millions of laptops, keyboards, physical access devices, and ID card readers relied upon by governments, hospitals, banks, and enterprises for secure and convenient authentication everyday.

Continuing with the Verifi line of rugged biometric fingerprint readers, the P5200 has a solid aluminum, steel coat sensor, powder-coated enclosure for superior performance and durability.



**Verifi**  
Fingerprint Products

### KEY FEATURES

#### High Resolution

Greater than 500 d.p.i. resolution and 8-bits of grayscale imaging.

#### SteelCoat

SteelCoat coating (black) improves ruggedness.

#### Low False Reject Rate

Works for virtually anyone in any condition – old and young, big and small, dry and wet, etc.

#### Patented Active Capacitive Sensing

Provides a higher immunity to parasitic effects than passive capacitive sensing, delivering a high signal-to-noise ratio and the ability to capture fingerprints from the widest range of skin types.

#### Large Area Sensor

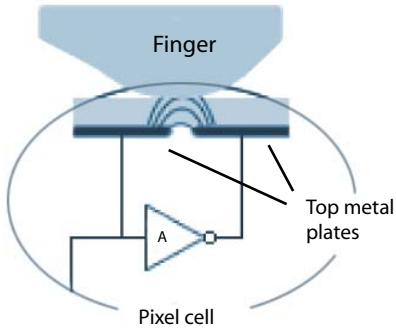
Sporting a 12.8mm X 18.0mm active sensing area, the P5100 can capture the large amount of fingerprint and minutia data needed to perform solid 1:1 verification and 1:N identification.

#### Robust Packaging

Solid aluminum construction with commercial grade powder coat finishing provides scratch resistance, durability and protection.

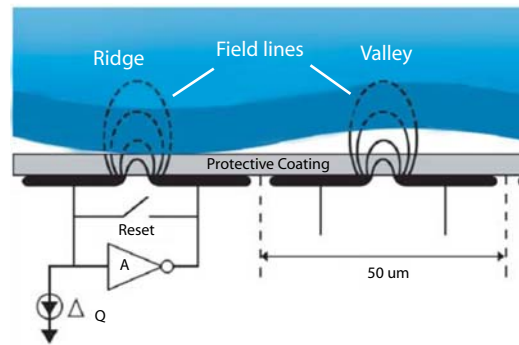
# P5200

## Desktop Fingerprint Reader



### Active capacitive pixel-sensing technology

#### How it works



#### TECH SPECS

<b>Device Performance</b>	USB 2.0 Full Speed Device Operating Systems: Windows 7, Vista, XP
<b>Fingerprint Reader</b>	UPEK TCS1 with EIM Fingerprint Sensor Active Capacitive Sensing with Enhanced Image Mode Technology High Definition: 256 X 360 Pixel Array, 12.8mm x 18mm 508 d.p.i.
<b>Mechanical</b>	Solid Aluminium Housing with Scratch Resistant Powder Coating 2.75 inches X 1.75 inches X 0.7 inches, 3.9 ounces. Cable: 6 feet, Stress Relief: >10lbs
<b>Environmental</b>	ESD Resistance: +/- 15KV Humidity: 5% to 90% RH @30°C Temperature Range: 0°C to +40°C
<b>Power Requirements</b>	Voltage: 4.5V - 5.25V Power Consumption Active: 50mA (typical) Power Consumption InActive: 1.0mA (typical)
<b>Regulatory Compliance</b>	FCC (Part B), WHQL, RoHS (Lead Free)

#### CUSTOMIZATION

- Custom Logo Marking:  
Your own Logo including graphics and text can be Lasered on the Device. (upon request)

#### SDK AVAILABILITY

- Software Developer's Kit (SDKs) are available for Independent Software Developers who wish to develop products that interface with the P5100.

#### SOFTWARE COMPATIBILITY

- Imprivata OneSign Integrated Platform
- Windows Biometric Framework Windows 7 (32/64-bit)
- ActivIdentity Card Management System  
ActivClient  
SecureLogin (SSO)
- SAP Lock Down all Applications and Transactions to the Field Level
- {Much More}

#### PRODUCT SUPPORT

- A full range of hardware, software, and design services, including advanced sensor control and fingerprint matching algorithms.

#### UPEK

- The TCS1 TouchChip® fingerprint sensor has the largest active area available among silicon fingerprint sensors, ensuring the best possible biometric performance. The TouchChip® sensor has been specifically designed for applications such as access control, network access, e-business, asset protection and government security.

FOR MORE INFORMATION. VISIT  
[www.zvetcobiometrics.com](http://www.zvetcobiometrics.com)

**Verifi**  
Fingerprint Products